

**NIKLS "One CALL" Property Services**

(24 Hr. ☎) **604.One.CALL** (663.2255)

toll-free 1.866.598.8414 • fax 604.598.8416  
#14 - 8456 129A Street, Surrey, BC V3W 1A2

[www.niklsonecall.com](http://www.niklsonecall.com)

## Infrared Electrical Surveys

Preventative Maintenance Checks for:

- Electrical Component Failure
- Bad Connections
- Potential Fire Hazards
- Intermittent Electrical Anomalies

**Prevent Costly Electrical Problems Before They Happen**

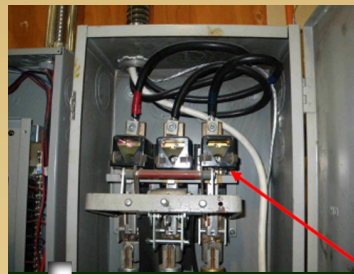
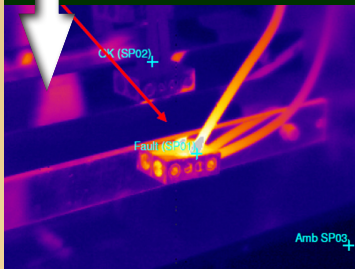


**Comprehensive Reporting  
of Priority Faults**

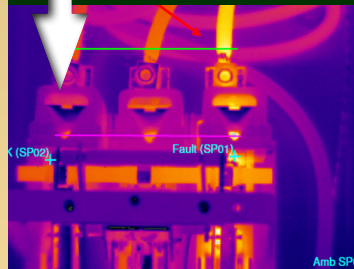
**Infrared Cameras See Excessive Heat Caused by Component Failure in ...**



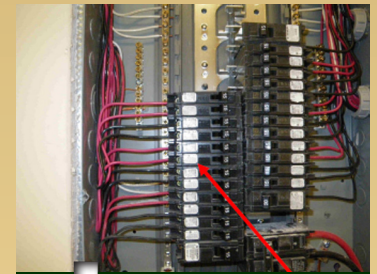
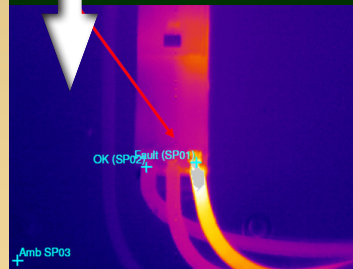
**Connections**



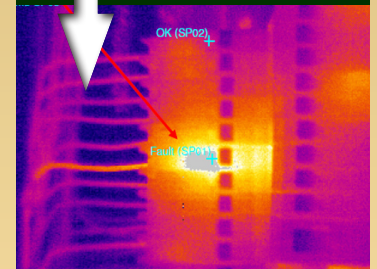
**Switches**



**Hardware**



**Breakers**



### Infrared Electrical Surveys

The best way to identify bad electrical connections and failing components is with an infrared survey in conjunction with current draw testing and verification.

This type of preventative maintenance is used to identify critical and even dangerous overheating of electro-mechanical components so they can be replaced before they fail or cause costly damage to other components in the electrical system.

### Electrical Service

Our trucks are fully stocked from our warehouse with all the lamps, ballasts and electrical supplies needed to take care of your commercial or strata properties.

With our certified electricians and contractors license, we're ready to handle all your electrical and lighting needs. We also handle exterior building repairs, electrical audits and troubleshooting.

***Serving Property Managers Since 1994***